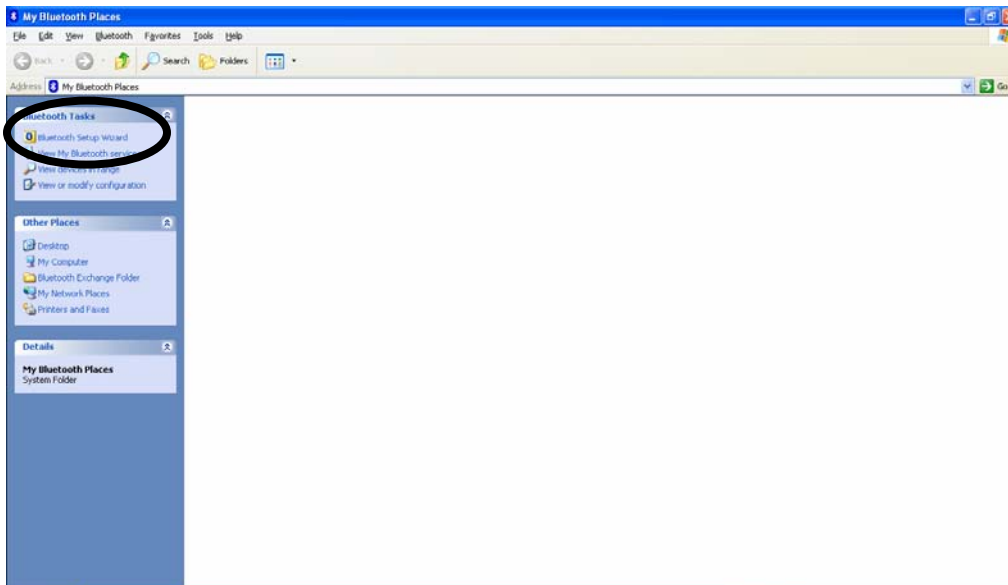
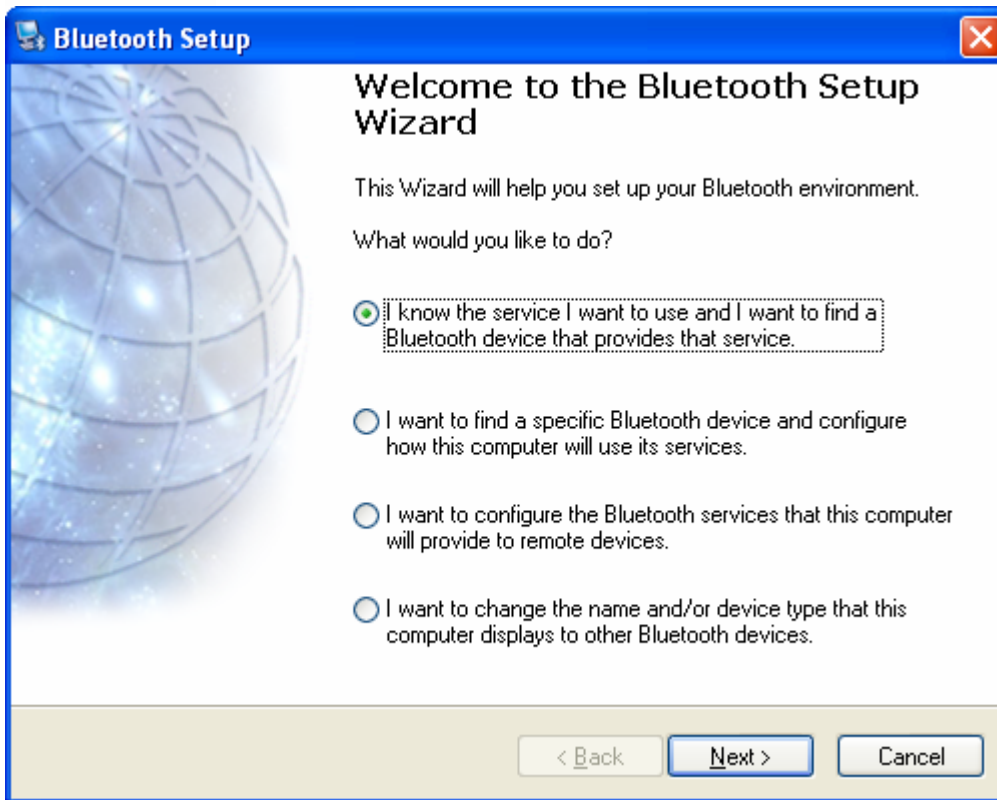


Instructions for configuring the Zspire Bluetooth Mouse using Windows XP Service Pack 2

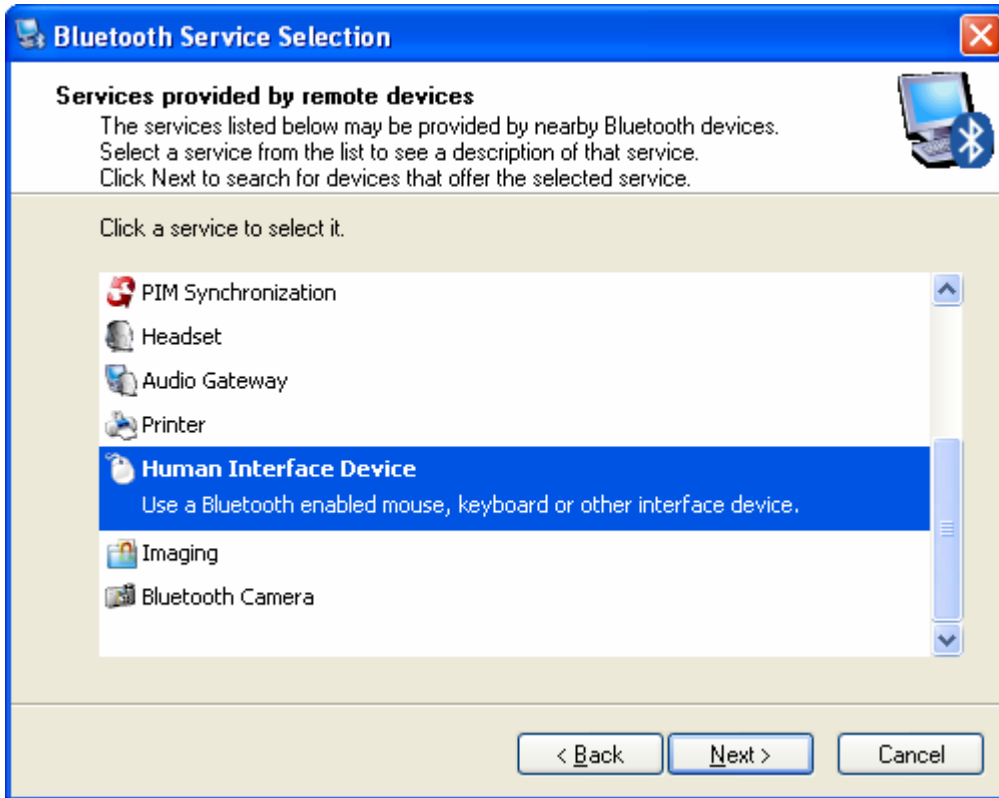
1. Make sure that your adapter has been installed following the manufacturer's instructions (this should not be necessary for adapters that are built into the computer, as they are usually installed as part of the operating system delivered). The Zspire Bluetooth Mouse requires a Bluetooth hardware adaptor to work.
2. Click on the "My Bluetooth Places" icon



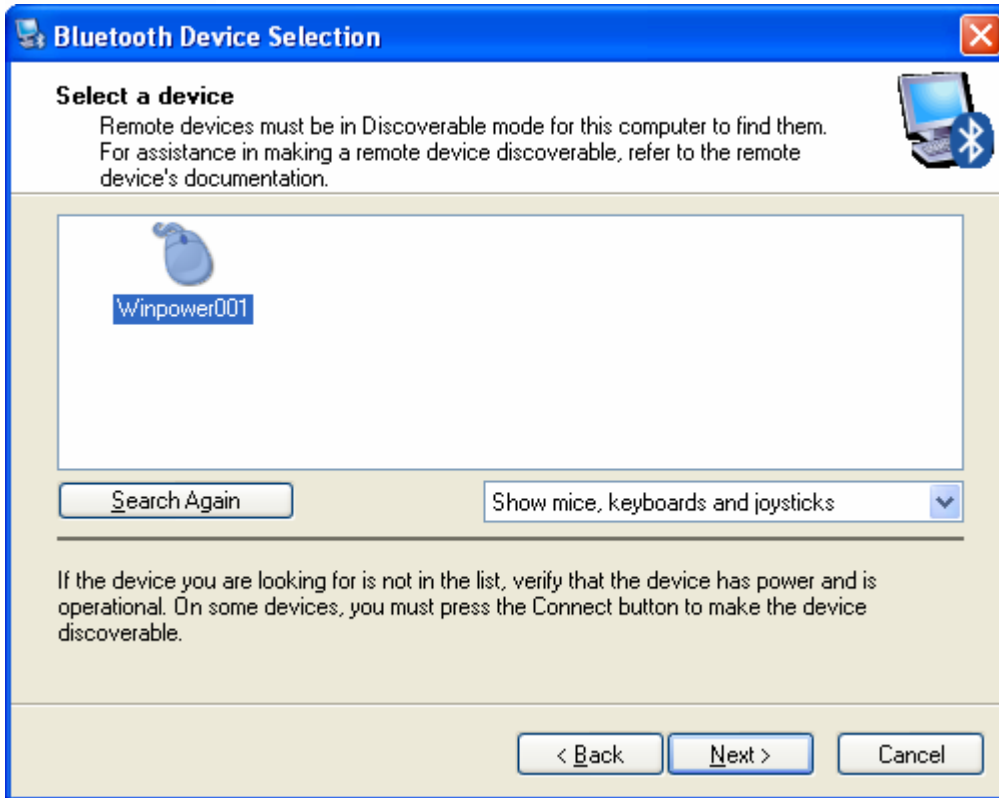
3. Select the "Bluetooth Setup Wizard" as highlighted above. You will get the following screen:



4. Select "I know the service I want to use and I want to find a Bluetooth device that provides that service" and click on "Next >"



5. Select "Human Interface Device". On the bottom of the Zspire Mouse, press (with a sharp thin object, like a paper clip) the "discoverable" button and press "Next >"



6. You should see a mouse appear as “Winpower001”. Select this device and press “Next >”. You will then see a number of drivers appear to be installed. At the end, you will get a message saying that your device has been installed correctly. Press “Finish” and your mouse should be operational!